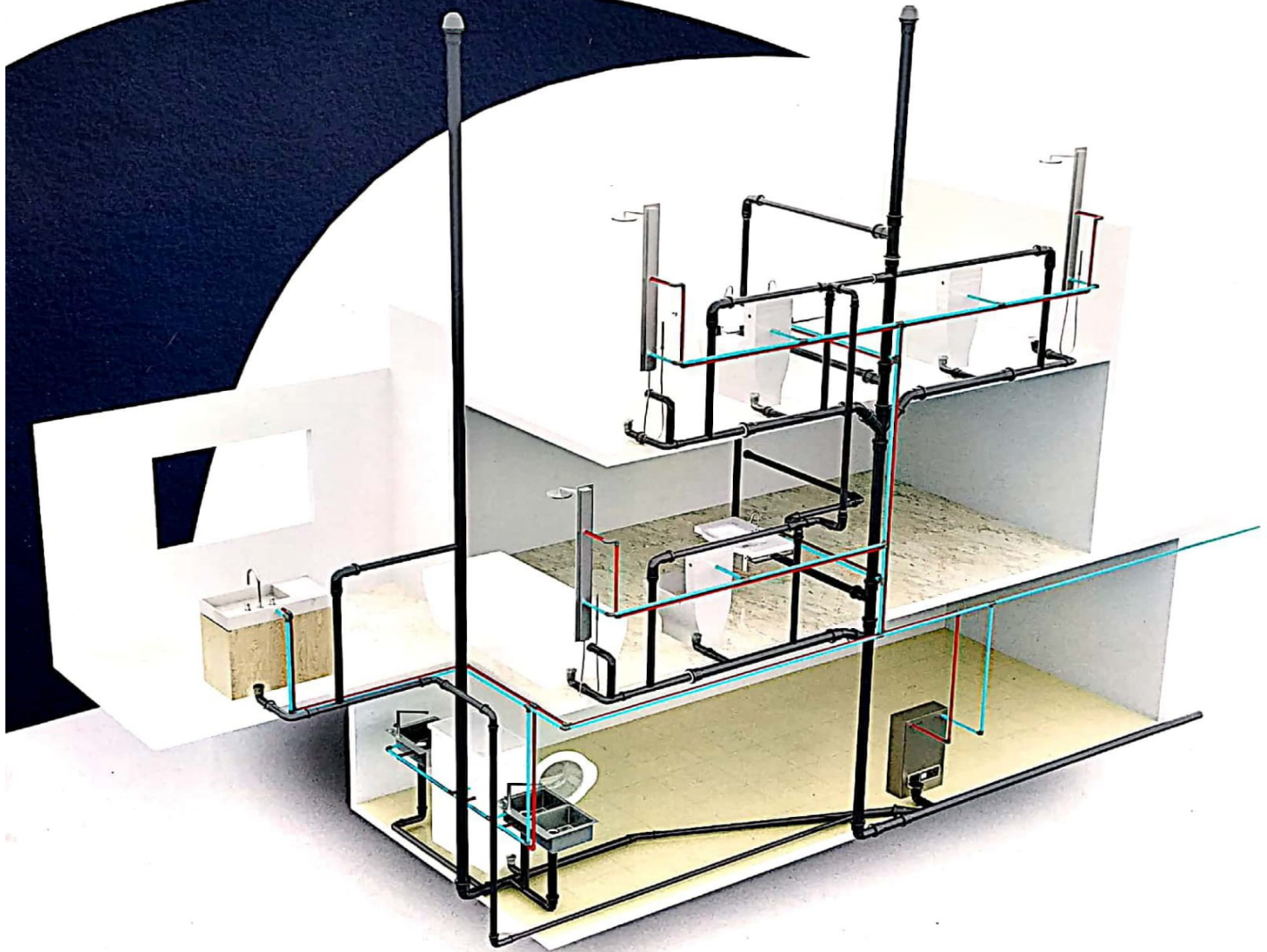


INNOVATIVE PIPE SUPPORTING SOLUTIONS

Since 2007

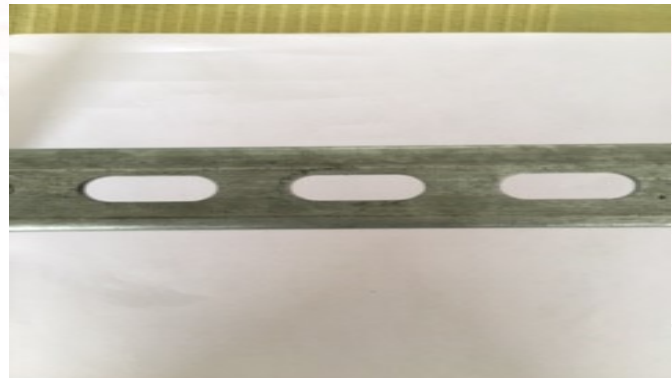
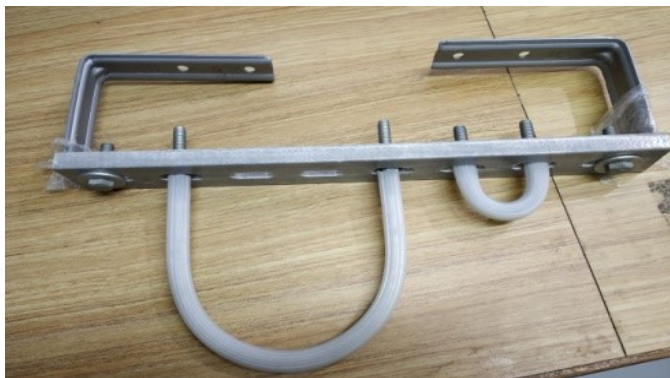
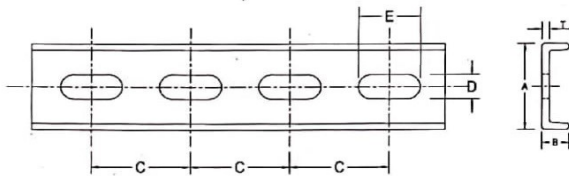
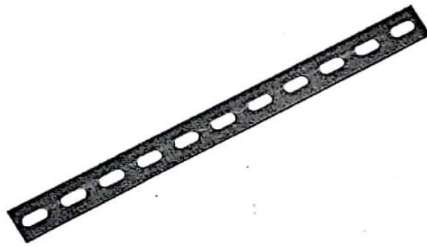
AN ISO 9001: 2015 COMPANY



www.shaivienterprise.com

 **Shaivi**
BECAUSE QUALITY & SERVICE MATTERS

Slotted Channel



STANDARD SCOPE OF SUPPLY:

1. FRP
2. Carbon Steel

Coatings for Carbon Steel only

- a. Galvanized
- b. Zinc plating
- c. Hot Dip

- Available in standard length of 8' only (2430mm)

- Recommended Pitch Length @ 1000 mm

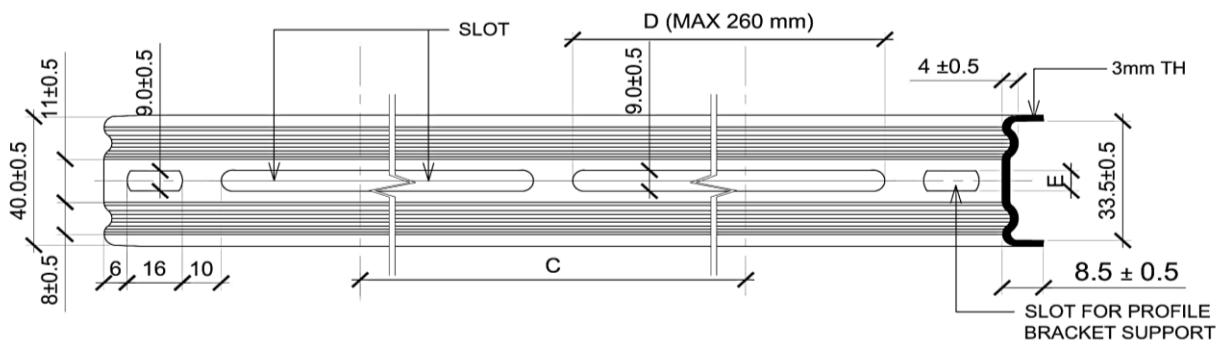
Low Carbon Deep Draw quality of Carbon steel is being used of reputed make only to avoid stresses being generated during the forming and manufacturing processes, which enhances the service life of the end product.

FIGURE

No.	Table	T	A	B	C	DXE
		MM \pm 0.2	MM \pm 0.5	MM \pm 0.5	MM \pm 0.5	MM \pm 0.5
1	FRP	3.50MM	39	11	40	26X11
2	CARBON STEEL	1.5 MM	38	8	37	26X11
		2 MM	38	8	38	26X11
		3 MM	40	10	38	26X11

• All dimensions are in mm

S4 Channel



Specially designed with continuous slotting and ribbing done to enhance the strength.

Coating done of Hot-Dip Zinc galvanising + Zn Al Flake which offers durability and endurance.

Available in sizes as per requirement in projects.

Material - Low Carbon Hot Roll Gauge Corrected Steel.

• All dimensions are in mm

Slotted LIP Channel



STANDARD SCOPE OF SUPPLY:

Low Carbon Steel

Coatings for Carbon Steel only

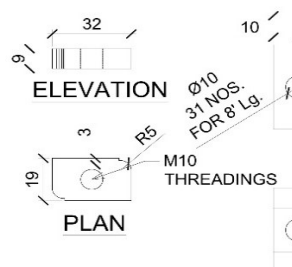
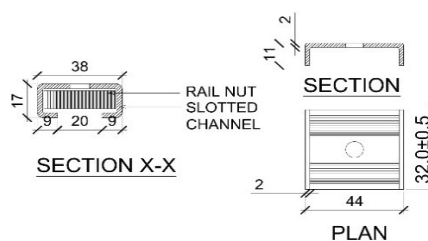
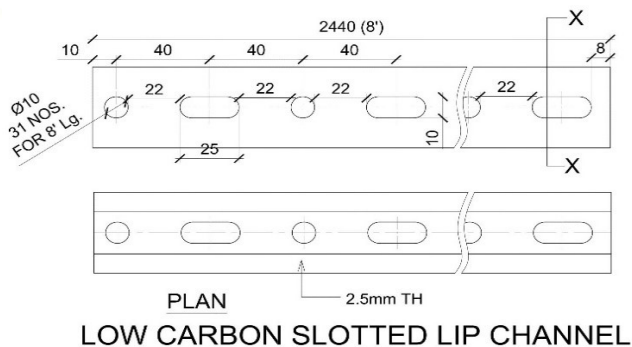
- a. Galvanized
- b. Zinc plating
- c. Hot Dip

- Available in standard length of 8' only (2430mm)
- Recommended Pitch Length @ 1000 mm

Low Carbon Deep Draw quality of Carbon steel is being used of reputed make only to avoid stresses being generated during the forming and manufacturing processes, which enhances the service life of the end product.

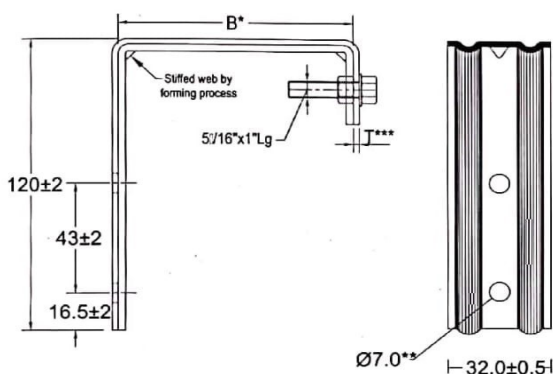
Parts used in LIP Channel System:

1. Clamp Bracket, 2. Rail Nut



• All dimensions are in mm

Profiled Bracket



STANDARD SCOPE OF SUPPLY:

Low Carbon Steel

Option: 1. Coatings

- a. Zn Al Flake
- b. Hot Dip + Zn Al Flake
- c. Zinc Plating

SCC Coating is recommended for longer service life.

- * Distance from wall subject to site layout conditions.
- ** It can be modified to meet engineering requirements.
- *** T = 2 - 3 mm +/- 0.5 mm

Recommended Pitch Length @ 1000 mm

Low Carbon Deep Draw quality of Carbon steel is being used of reputed make only to avoid stresses being generated during the forming and manufacturing processes, which enhances the service life of the end product.

Added Advantage: This Profiled Bracket reduces the weight on the built structure which ensures better strength with superior stability.

Figure 1

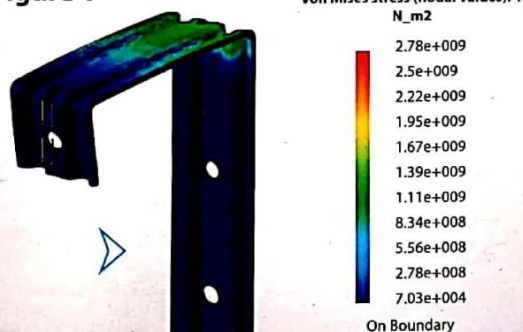
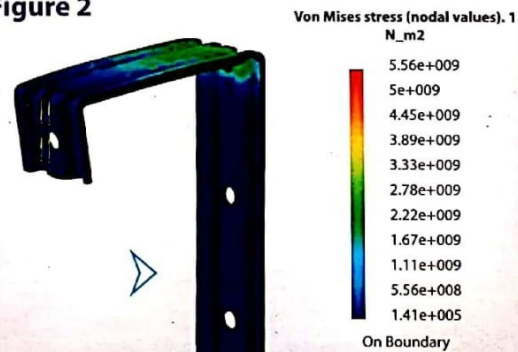
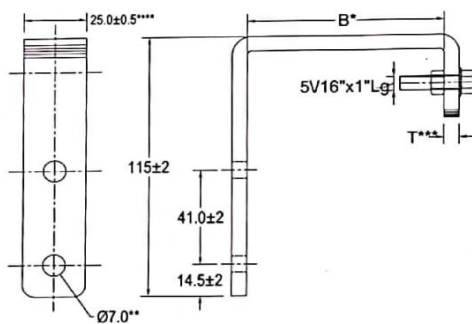


Figure 2



- The mechanical loading simulated for finite element analysis as shown in the studies are self explanatory.
- All dimensions are in mm

Distance Bracket



STANDARD SCOPE OF SUPPLY:

Carbon Steel Zinc Plated

Option: 1. Coatings

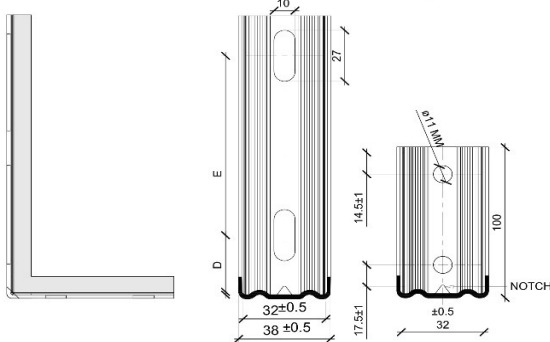
- a. Zn Al Flake
- b. **Hot Dip + Zn Al Flake**
- c. SCC Coating

• Recommended Pitch Length @ 1000mm

- * Distance from wall subject to site layout conditions.
- ** It can be modified to meet engineering requirements.
- *** 5mm or 6mm \pm 0.5mm subject to site conditions.
- **** Width of bracket can increase for extra strong application.

Low Carbon Deep Draw quality of Carbon steel is being used of reputed make only to avoid stresses being generated during the forming and manufacturing processes, which enhances the service life of the end product.

Mono Bracket



• All dimensions are in mm

STANDARD SCOPE OF SUPPLY:

Carbon Steel Zinc Plated

Option: 1. Coatings

- a. Zn Al Flake
- b. **Hot Dip + Zn Al Flake**
- c. Hot Dip

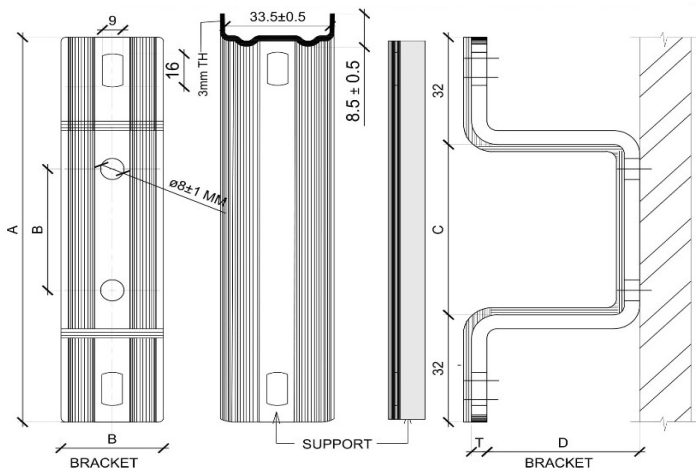
Option: 2. A, E & D are Subject to site layout conditions.

Option: 3. IN SITU Bracket

• Recommended Pitch Length @ 1000 mm

Low Carbon Deep Draw quality of Carbon steel is being used of reputed make only to avoid stresses being generated during the forming and manufacturing processes, which enhances the service life of the end product.

Rain Water Bracket

**STANDARD SCOPE OF SUPPLY:**

Carbon Steel Zinc Plated

Option: 1. Coatings

- a. Zn Al Flake
- b. Nickel Plating for Food & Pharma Industries
- c. Hot Dip
- d. SCC Coatings

- Recommended Pitch Length @ 1000 mm
- T= 5-6 mm \pm 0.5 mm
- # \varnothing 7.0 mm will be use for the pipe size less than 4"
- Rain water bracket can be manufactured in all other pipe sizes and types according to customer specifications.

When ordering, please specify:

- 1** Figure D **2** Pipe Size **3** Finish

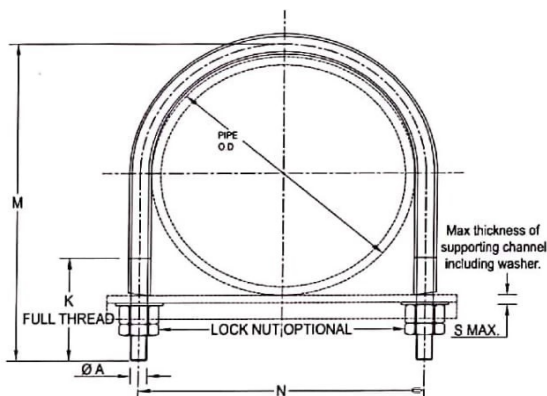
Low Carbon Deep Draw quality of Carbon steel is being used of reputed make only to avoid stresses being generated during the forming and manufacturing processes, which enhances the service life of the end product.

FIG - 1 UPVC HIGH PRESSURE PLUMBING SYSTEMS

<div> <div>FIG - 1</div> <div>UPVC HIGH PRESSURE PLUMBING SYSTEMS</div> </div>						
No.	Pipe Size	Pipe	BRACKET	D	A	C
		O/D	DIMENSION		± 1.0	± 1.0
	INCH	MM	BXT ± 0.5 MM	INCH	MM	MM
1	4"	110mm	25 X 6mm	2"	155	66
		110mm	25 X 6mm	3"	155	66
		110mm	25 X 6mm	4"	155	66
2	6"	160MM	25 X 6mm	2"	215	130
		160MM	25 X 6mm	3"	215	130
		160MM	25 X 6mm	4"	215	130

- All dimensions are in mm

'U' Bolts



STANDARD SCOPE OF SUPPLY:

Carbon Steel Zinc Plated + Noise Absorbing Silicon Sleeve

Option: 1. Coatings

- a. Zn Al Flake
- b. Nickel Plating for Food & Pharma Industries
- c. SCC Coating

Option: 2. Rubber Sleeve in EPDM is also available.

Option: 3. ϕ 8 mm and ϕ 10 mm are available on special demand.

- Recommended Pitch Length @ 1000 mm
- Recommended silicon rubber sleeve for enhancement of service life of product.

When ordering, please specify:

- 1** Figure No **2** Pipe Size **3** Finish

Low Carbon Deep Draw quality of Carbon steel is being used of reputed make only to avoid stresses being generated during the forming and manufacturing processes, which enhances the service life of the end product.

FIG - 1 UPVC HIGH PRESSURE PLUMBING SYSTEMS

No.	Pipe Size	Pipe	A	N	M	K	S
		O/D	DIA				Max
INCH	MM	MM \pm 0.5	MM \pm 1	MM \pm 2	MM \pm 0.5	MM \pm 0.2	
1	1/2"	21.34 \pm 0.10	7	31.34	44	25	5
2	3/4"	26.67 \pm 0.10	7	36.67	48	25	5
3	1"	33.40 \pm 0.13	7	43.4	59	35	5
4	1 1/4"	42.16 \pm 0.13	7	52.16	71	40	5
5	1 1/2"	48.26 \pm 0.15	7	58.26	80	40	5
6	2"	60.32 \pm 0.15	7	70.32	95	50	5
7	2 1/2"	73.02 \pm 0.18	7	83.02	107	50	5
8	3"	88.90 \pm 0.20	7	98.9	125	50	5

• All dimensions are in mm

FIG - 2 CPVC HOT AND COLD WATER SYSTEMS

No.	Pipe Size	Pipe	A	N	M	K	S
		O/D MM	DIA				Max
	INCH	MIN	MAX	MM \pm 0.5	MM \pm 1	MM \pm 2	MM \pm 0.5
1	1/2"	15.80	16.00	7	25	35	25
2	3/4"	22.10	22.30	7	32	44	25
3	1"	28.50	28.70	7	39	48	35
4	1 1/4"	34.80	35.00	7	45	57	35
5	1 1/2"	41.20	41.40	7	52	71	40
6	2"	53.90	54.10	7	64	84	50
7	2 1/2"	72.84	73.20	7	83	107	50
8	3"	88.70	89.10	7	98	125	50
9	4"	114.07	114.53	7	124	139	50

'U' Bolts

FIG - 3 PVC PRESSURE PIPE							
No.	Pipe Size	Pipe O/D	A DIA	N	M	K	S Max
	INCH	MM	MM ± 0.5	MM ± 1	MM ± 2	MM ± 0.5	MM ± 0.2
1	1"	32 ± 0.3	7	42	55	35	5
2	1 1/4"	40 ± 0.3	7	50	68	40	5
3	1 1/2"	50 ± 0.3	7	60	83	40	5
4	2"	63 ± 0.3	7	73	101	50	5
5	2 1/2"	75 ± 0.3	7	85	105	50	5
6	3"	90 ± 0.3	7	100	128	50	5
7	4"	110 ± 0.4	7	120	144	50	5
8	6"	160 ± 0.5	7	170	191	50	5
9	8"	200 ± 0.6	7	210	254	50	5

FIG - 6 PP-R HOT AND COLD WATER SYSTEM							
No.	Pipe Size	Pipe O/D	A DIA	N	M	K	S Max
	INCH	MM	MM ± 0.5	MM ± 1	MM ± 2	MM ± 0.5	MM ± 0.2
1	1/2"	20.0	7	-	-	-	-
2	3/4"	25.0	7	-	-	-	-
3	1"	32.0	7	42	55	35	5
4	1 1/4"	40.0	7	50	68	35	5
5	1 1/2"	50.0	7	60	83	40	5
6	2"	63.0	7	73	101	50	5
7	2 1/2"	75.0	7	85	105	50	5
8	3"	90.0	7	100	128	50	5
9	4"	110.0	7	120	144	50	5
10	6"	160.0	7	170	191	50	5

FIG - 4 CAST IRON PIPES							
No.	Pipe Size	Pipe O/D	A DIA	N	M	K	S Max
	INCH	MM	MM ± 0.5	MM ± 1	MM ± 2	MM ± 0.5	MM ± 0.2
1	4"	105	7	115	140	50	5
2	6"	160	7	170	191	50	5
3	8"	210	7	220	254	50	5

FIG - 7 POLYETHYLENE PIPING SYSTEMS							
No.	Pipe Size	Pipe O/D	A DIA	N	M	K	S Max
	INCH	MM	MM ± 0.5	MM ± 1	MM ± 2	MM ± 0.5	MM ± 0.2
1	1/2"	20	7	-	-	-	-
2	3/4"	25	7	35	42	25	4.5
3	1"	32	7	42	55	35	4.5
4	1 1/4"	40	7	50	68	40	4.5
5	1 1/2"	50	7	60	83	40	4.5
6	2"	63	7	73	101	50	4.5
7	2 1/2"	75	7	85	105	50	4.5
8	3"	90	7	100	128	50	4.5
9	4"	110	7	120	144	50	4.5
10	6"	160	7	170	191	50	4.5

FIG - 5 STEEL PIPES							
No.	Pipe Size	Pipe O/D	A DIA	N	M	K	S Max
	INCH	MM	MM ± 0.5	MM ± 1	MM ± 2	MM ± 0.5	MM ± 0.2
1	1/2"	21.3	7	31	44	25	4.5
2	3/4"	26.9	7	37	48	25	4.5
3	1"	33.7	7	44	59	35	4.5
4	1 1/4"	42.4	7	52	71	40	4.5
5	1 1/2"	48.3	7	59	80	40	4.5
6	2"	60.3	7	70	95	50	4.5
7	2 1/2"	76.1	7	86	107	50	4.5
8	3"	88.9	7	99	125	50	4.5
9	4"	114.3	7	124	139	50	4.5
10	6"	168.3	7	178	193	50	4.5
11	8"	219.1	7	229	287	50	4.5

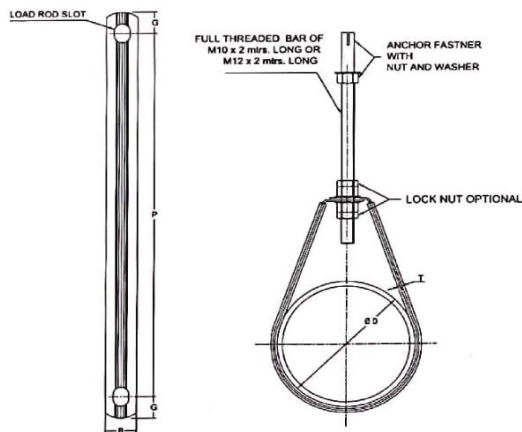
FIG - 8 STAINLESS STEEL AND COPPER PIPE							
No.	Pipe Size	Pipe O/D	A DIA	N	M	K	S Max
	INCH	MM	MM ± 0.5	MM ± 1	MM ± 2	MM ± 0.5	MM ± 0.2
1	1"	28.50	7	39	48	25	5
2	1 1/4"	34.80	7	45	57	25	5
3	1 1/2"	41.20	7	52	71	35	5
4	2"	53.90	7	64	84	35	5
5	2 1/2"	72.84	7	83	107	40	5

- Other sizes are available according to customer specification.
- All dimensions are in mm

Pipe Hanger Clamp



It is mandatory to penetrate Anchor Fastener in a depth of minimum 25mm in RCC member for rigid mounting of the clamp



Rib makes the product stronger without increasing the thickness.



STANDARD SCOPE OF SUPPLY:

Carbon Steel Galvanised + Noise Absorbing Silicon Sleeve.

Option: 1. Coatings

- Zn Al Flake
- Nickel Plating for Food & Pharma Industries
- SCC Coating

Option: 2. Rubber Sleeve in EPDM is also available.

- Recommended Pitch Length @ 1000 mm
- Recommended silicon rubber sleeve for enhancement of service life of product.

When ordering, please specify:

- Figure No
- Pipe Size
- Finish

Low Carbon Deep Draw quality of Carbon steel is being used of reputed make only to avoid stresses being generated during the forming and manufacturing processes, which enhances the service life of the end product.

• All dimensions are in mm

Pipe Hanger Clamp

FIG - 1 UPVC HIGH PRESSURE PLUMBING SYSTEMS							
No.	Pipe Size	Pipe	D	CLAMP	P	G	Safe Working
		O/D	DIA	DIMENSION	± 2.0	± 0.5	Load
	INCH	MM	MM ± 0.8	B X T	MM		KG.
1	1"	26.67	29.17	24 X 1.5MM	196	14MM	125
2	1 1/4"	33.40	35.90	24 X 1.5MM	211	14MM	125
3	1 1/2"	42.16	44.66	24 X 1.5MM	256	14MM	125
4	2"	48.26	50.76	24 X 1.5MM	281	14MM	125
5	2 1/2"	60.32	62.82	24 X 1.5MM	307	14MM	125
6	3"	73.02	75.52	24 X 1.5MM	358	14MM	125
7	4"	88.90	91.40	24 X 1.5MM	452	14MM	125
8	6"	168.28	170.78	24 X 1.5MM	608	14MM	125

FIG - 2 SWR/PVC PRESSURE PIPE							
No.	Pipe Size	Pipe	D	CLAMP	P	G	Safe Working
		O/D	DIA	DIMENSION	± 2.0	± 0.5	Load
	INCH	MM	MM ± 1.0	B X T	MM		KG.
1	1 1/4"	40	42.5	24 X 1.5MM	240	14MM	125
2	1 1/2"	50	52.5	24 X 1.5MM	271	14MM	125
3	2"	63	65.5	24 X 1.5MM	276	14MM	125
4	2 1/2"	75	77.5	24 X 1.5MM	338	14MM	125
5	3"	90	92.5	24 X 1.5MM	366	14MM	125
6	4"	110	112.5	24 X 1.5MM	432	14MM	125
7	6"	160	162.5	24 X 1.5MM	608	14MM	125

FIG - 3 STEEL PIPES							
No.	Pipe Size	Pipe	D	CLAMP	P	G	Safe Working
		O/D	DIA	DIMENSION	± 2.0	± 0.5	Load
	INCH	MM	MM ± 0.8	B X T	MM		KG.
1	1"	33.70	36.20	24 X 1.5MM	190	14MM	125
2	1 1/4"	42.40	44.90	24 X 1.5MM	211	14MM	125
3	1 1/2"	48.30	50.80	24 X 1.5MM	250	14MM	125
4	2"	60.30	62.80	24 X 1.5MM	281	14MM	125
5	2 1/2"	76.10	78.60	24 X 1.5MM	307	14MM	125
6	3"	88.90	91.40	24 X 1.5MM	358	14MM	125
7	4"	114.30	116.80	24 X 1.5MM	452	14MM	125
8	6"	168.30	170.80	24 X 1.5MM	608	14MM	125

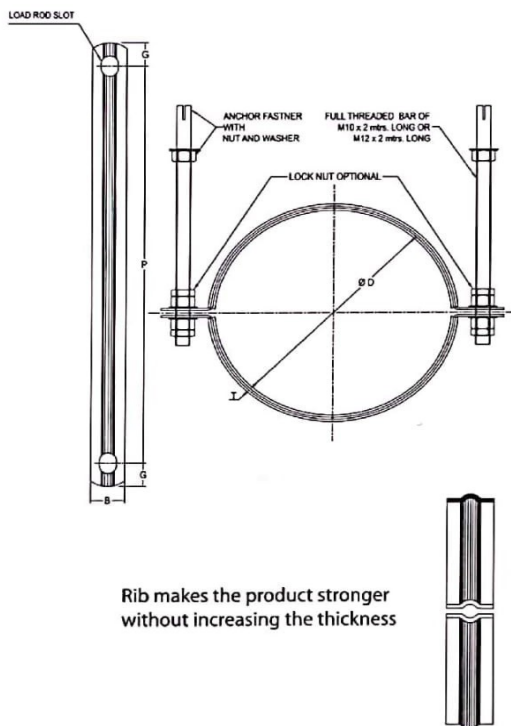
FIG - 4 CAST IRON PIPES							
No.	Pipe Size	Pipe	D	CLAMP	P	G	Safe Working
		O/D	DIA	DIMENSION	± 2.0	± 0.5	Load
	INCH	MM	MM ± 1.0	B X T	MM		KG.
1	4"	110	112.5	24 X 1.5MM	441	14MM	125
2	6"	160	162.5	24 X 1.5MM	610	14MM	125
3	8"	210	212.5	24 X 1.5MM	802	14MM	125

- Other sizes are available according to customer specification.
- All dimensions are in mm

Double Side Suspension (DSS) Clamp



It is mandatory to penetrate Anchor Fastener in a depth of minimum 25mm in RCC member for rigid mounting of the clamp



Rib makes the product stronger without increasing the thickness

B x T Can be increased for extra strong application

• All dimensions are in mm

STANDARD SCOPE OF SUPPLY:

Carbon Steel Galvanised + Noise Absorbing Silicon Rubber Sleeve.

Option: 1. Coatings

- Zn Al Flake
- Nickel Plating for Food & Pharma Industries
- SCC Coating

Option: 2. Rubber Sleeve in EPDM is also available.

- Recommended Pitch Length @ 1000mm
- Recommended silicon rubber sleeve for enhancement of service life of product.

When ordering, please specify:

- Figure No
- Pipe Size
- Finish

Low Carbon Deep Draw quality of Carbon steel is being used of reputed make only to avoid stresses being generated during the forming and manufacturing processes, which enhances the service life of the end product.

Double Side Suspension (DSS) Clamp

FIG - 1 UPVC HIGH PRESSURE PIPE							
No.	Pipe Size	Pipe	D	CLAMP	P	G	Safe Working
		O/D	DIA	DIMENSION	± 2.0	± 0.5	Load
	INCH	MM	MM ± 1.0	B X T	MM		KG.
1	1"	26.67	30.67	24 X 1.5MM	88	14MM	125
2	1 1/4"	33.40	37.40	24 X 1.5MM	102	14MM	125
3	1 1/2"	42.16	46.16	24 X 1.5MM	113	14MM	125
4	2"	48.26	52.26	24 X 1.5MM	137	14MM	125
5	2 1/2"	60.32	64.32	24 X 1.5MM	151	14MM	125
6	3"	73.02	77.02	24 X 1.5MM	183	14MM	125
7	4"	88.90	92.90	24 X 1.5MM	225	14MM	125
8	6"	168.28	172.28	24 X 1.5MM	292	14MM	125

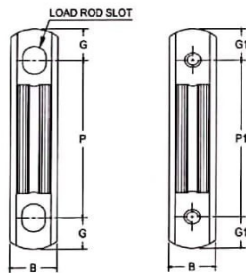
FIG - 2 SWR/PVC PRESSURE PIPE							
No.	Pipe Size	Pipe	D	CLAMP	P	G	Safe Working
		O/D	DIA	DIMENSION	± 2.0	± 0.5	Load
	INCH	MM	MM ± 1.0	B X T	MM		KG.
1	1"	32	36	24 X 1.5MM	87	14MM	125
2	1 1/4"	40	44	24 X 1.5MM	96	14MM	125
3	1 1/2"	50	54	24 X 1.5MM	116	14MM	125
4	2"	63	67	24 X 1.5MM	131	14MM	125
5	2 1/2"	75	79	24 X 1.5MM	161	14MM	125
6	3"	90	94	24 X 1.5MM	186	14MM	125
7	4"	110	114	24 X 1.5MM	211	14MM	125
8	6"	160	164	24 X 1.5MM	292	14MM	125

FIG - 3 STEEL PIPE							
No.	Pipe Size	Pipe	D	CLAMP	P	G	Safe Working
		O/D	DIA	DIMENSION	± 2.0	± 0.5	Load
	INCH	MM	MM ± 1.0	B X T	MM		KG.
1	1"	33.70	37.70	24 X 1.5MM	92	14MM	125
2	1 1/4"	42.40	46.40	24 X 1.5MM	102	14MM	125
3	1 1/2"	48.30	52.30	24 X 1.5MM	113	14MM	125
4	2"	60.30	64.30	24 X 1.5MM	130	14MM	125
5	2 1/2"	76.10	80.10	24 X 1.5MM	161	14MM	125
6	3"	88.90	92.90	24 X 1.5MM	183	14MM	125
7	4"	114.30	118.30	24 X 1.5MM	225	14MM	125
8	6"	168.30	172.30	24 X 1.5MM	301	14MM	125
9	8"	219.10	223.10	24 X 1.5MM	378	14MM	125

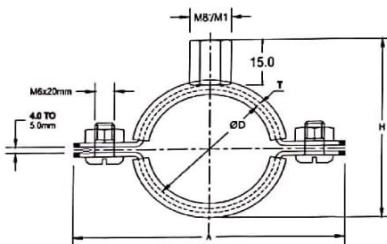
FIG - 4 CAST IRON PIPE							
No.	Pipe Size	Pipe	D	CLAMP	P	G	Safe Working
		O/D	DIA	DIMENSION	± 2.0	± 0.5	Load
	INCH	MM	MM ± 1.0	B X T	MM		KG.
1	4"	110	114	24 X 1.5MM	206	14MM	125
2	6"	160	164	24 X 1.5MM	292	14MM	125
3	8"	210	214	24 X 1.5MM	398	14MM	125

• Other sizes are available according to customer specification.

Split Clamp



It is mandatory to penetrate Anchor Fastener in a depth of minimum 25mm in RCC member for rigid mounting of the clamp



Ribs makes the product stronger without increasing the thickness



B x T Can be increased for extra strong application.

* All Dimensions are in Millimeters.

STANDARD SCOPE OF SUPPLY:

Carbon Steel Zinc Plated + Noise Absorbing Silicon Rubber Sleeve.

Option: 1. Coatings

- Zn Al Flake
- Nickel Plating for Food & Pharma Industries
- SCC Coating

Option: 2. Rubber Sleeve in EPDM is also available.

- Recommended Pitch Length @ 1000mm
- Recommended silicon rubber sleeve for enhancement of service life of product.

When ordering, please specify:

- Figure No
- Pipe Size
- Finish

Low Carbon Deep Draw quality of Carbon steel is being used of reputed make only to avoid stresses being generated during the forming and manufacturing processes, which enhances the service life of the end product.

Split Clamp

FIG - 1

UPVC HIGH PRESSURE PIPE

NO.	Connecting Thread	Pipe Size INCH	Pipe O/D MM	D DIA MM ± 1.0	CLAMP DIMENSION B X T	G / G1 ± 1.0 MM	P / P1 ± 2.0 MM	H ± 2.0 MM	A ± 2.0 MM	Safe Working Load KG.
1	M8 / M10	3/4"	26.67	31.67	19 X 1.5MM	13	69	50.67	84.67	103
2	M8 / M10	1"	33.4	38.4	19 X 1.5MM	13	79	57.4	91.4	103
3	M8 / M10	1 1/4"	42.16	47.16	19 X 1.5MM	13	99	66.16	100.16	103
4	M8 / M10	1 1/2"	48.26	53.26	19 X 1.5MM	13	106	72.26	106.26	103
5	M8 / M10	2"	60.32	65.32	19 X 1.5MM	13	124	84.32	118.32	103
6	M8 / M10	2 1/2"	73.02	78.02	19 X 1.5MM	13	144	97.02	131.02	103
7	M8 / M10	3"	88.9	93.9	19 X 1.5MM	13	184	112.9	146.9	103

FIG - 2

CPVC HOT AND COLD WATER PIPE

NO.	Connecting Thread	Pipe Size INCH	Pipe O/D MM	D DIA MM ± 1.0	CLAMP DIMENSION B X T	G / G1 ± 1.0 MM	P / P1 ± 2.0 MM	H ± 2.0 MM	A ± 2.0 MM	Safe Working load KG.
1	M8 / M10	1/2"	16.00	21.00	19 X 1.5MM	13	54	40	74	103
2	M8 / M10	3/4"	22.30	27.30	19 X 1.5MM	13	63	46.3	80.3	103
3	M8 / M10	1"	28.70	33.70	19 X 1.5MM	13	73	52.7	86.7	103
4	M8 / M10	1 1/4"	35.00	40.00	19 X 1.5MM	13	78	59	93	103
5	M8 / M10	1 1/2"	41.40	46.40	19 X 1.5MM	13	96	65.4	99.4	103
6	M8 / M10	2"	54.10	59.10	19 X 1.5MM	13	115	78.1	112.1	103
7	M8 / M10	2 1/2"	73.20	78.20	19 X 1.5MM	13	134	97.2	131.2	103
8	M8 / M10	3"	89.10	94.10	19 X 1.5MM	13	169	113.1	147.1	103
9	M8 / M10	4"	114.53	119.53	19 X 1.5MM	-	-	-	-	-

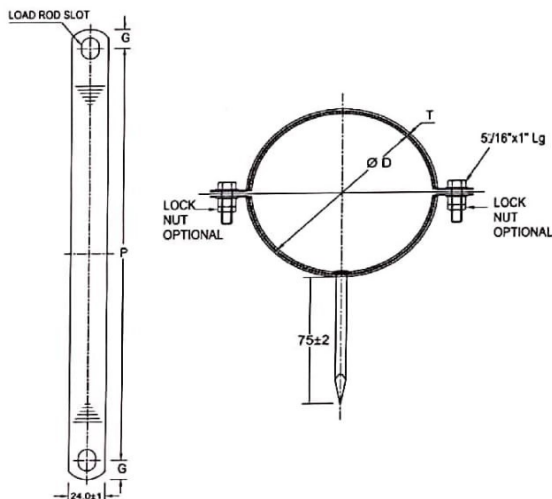
FIG - 3

SWR/PVC PRESSURE PIPE

NO.	Connecting Thread	Pipe Size INCH	Pipe O/D MM	D DIA MM ± 1.0	CLAMP DIMENSION B X T	G / G1 ± 1.0 MM	P / P1 ± 2.0 MM	H ± 2.0 MM	A ± 2.0 MM	Safe Working Load KG.
1	M8 / M10	2 1/2"	75	80	19 X 1.5MM	13	154	99	133	103
2	M8 / M10	3"	90	95	19 X 1.5MM	13	174	114	148	103
3	M8 / M10	4"	110	115	19 X 1.5MM	13	205	134	168	103
4	M8 / M10	6"	160	165	19 X 1.5MM	13	281	184	218	103

- Other sizes are available according to customer specification.
- All dimensions are in mm

Nail Clamp



STANDARD SCOPE OF SUPPLY:

Carbon Steel Zinc Plated + Noise Absorbing Silicon Sleeve.

Option: 1. Coatings

- a. Zn Al Flake
- b. Nickel Plating for Food & Pharma Industries
- c. SCC Coating

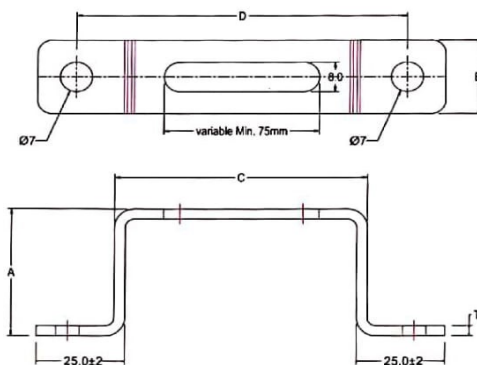
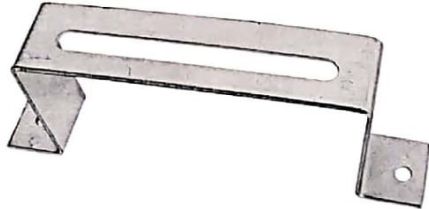
Option: 2. Rubber Sleeve in EPDM is also available.

- 100% as per plumbing needs.
- Plumbing IN SITU Clamp
- T - 1.5 to 2.0mm
- Recommended Pitch Length @ 1000mm
- Recommended silicon rubber sleeve for enhancement of service life of product.

Low Carbon Deep Draw quality of Carbon steel is being used of reputed make only to avoid stresses being generated during the forming and manufacturing processes, which enhances the service life of the end product.

• All dimensions are in mm

LCH Bracket



STANDARD SCOPE OF SUPPLY:

Carbon Steel

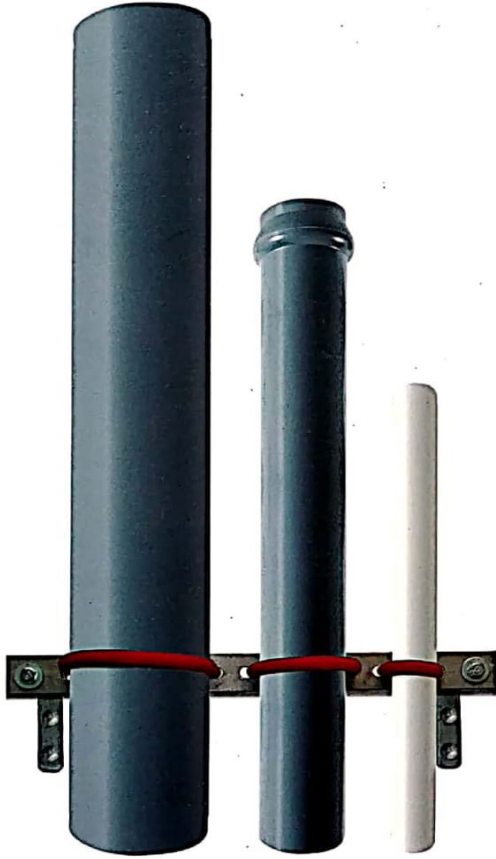
Coatings for Carbon Steel only

- a. Zinc Plating
- b. Galvanized

- Recommended Pitch Length @ 1000 mm
- A, C & D are subject to site layout conditions.
- Available on special demand

Low Carbon Deep Draw quality of Carbon steel is being used of reputed make only to avoid stresses being generated during the forming and manufacturing processes, which enhances the service life of the end product.

• All dimensions are in mm



Shaivi

SHAIVI ENTERPRISE

61-62, Shivam Industrial Park,
Opp. Sarvoday Hotel, Parikh Packaging Lane,
Moraiya Chancharvadi Vasna Gam Road,
Changodar, Ahmedabad-382 213, Gujarat.

T 94265 13873 | 6351363855

E shaivienterprise@gmail.com

W www.shaivienterprise.com



KEDC 0091 98794 78822